

**SEGA**  
**Moody 422cc For Sale**

**Year:** 1987

**Price** £75,000 or euro equivalent

**Location:** Leros, Greece

EU VAT Paid





Due to a change in circumstances we are forced to sell Sega. She has had 3 careful loving owners from new. Fully outfitted for live aboard cruising. She is a boat that combines great sailing with comfortable living.

She has a large lithium battery bank, solar panels, wind generator, water maker, 2kw inverter and mikuni hot water and heater. This means she has lots of power available and instant hot water giving you the freedom and comfort to stop anywhere and sail anytime!

We have sailed Sega from Sardinia to her new base in Leros. We have enjoyed visiting Malta, Italy, Montenegro, Albania, Cyprus and Greece. Winters have been spent in different locations allowing us to explore each area as we have gone along. Her base in Leros was to allow us to visit Turkey and the Greek islands we haven't yet explored.

Since owning Sega we have carried out a major refit installing lithium batteries and upgrading charging capabilities and replaced much of the boat wiring. We have substantially improved the anchoring experience by installing a high spec Lofrans Tigres windlass with foot controls at the bow and switch control at the helm position, replacing all wiring at the same time. The anchor launch has been extended to house a Vulcan anchor and a longer Lofrans 8mm chain was also added.

The control lines for the sails have also been improved to make it easy to deploy and control the sails, making the sailing experience stress free.

We are also happy to advise that the previous owners had standing rigging and keel bolts replaced in 2018. Most of the through hulls have been replaced since 2020 and the majority of the running rigging is less than 4 years old. The engine was upgraded to 56HP in 2019.

We have sailed around the world and have used all our sailing experience to equip this boat. We also have all the tools, equipment, etc that we used on board so you can tackle any maintenance issues yourself if needed!

We are leaving everything on the boat so all you need to do is get on board and start living the dream!

## Additional Specs, Equipment and Information

Builder: Marina Project of Plymouth

Designer: Bill Dixon

### Dimensions

LOA 12.42m, 40.8ft.                      Beam 4.07m, 13.3ft

LWL 10.77m, 34.8ft.

Max draft 1.83m

Displacement 9,528kg.                      Ballast 3,811kg

Berths 8, 2 doubles and 4 singles

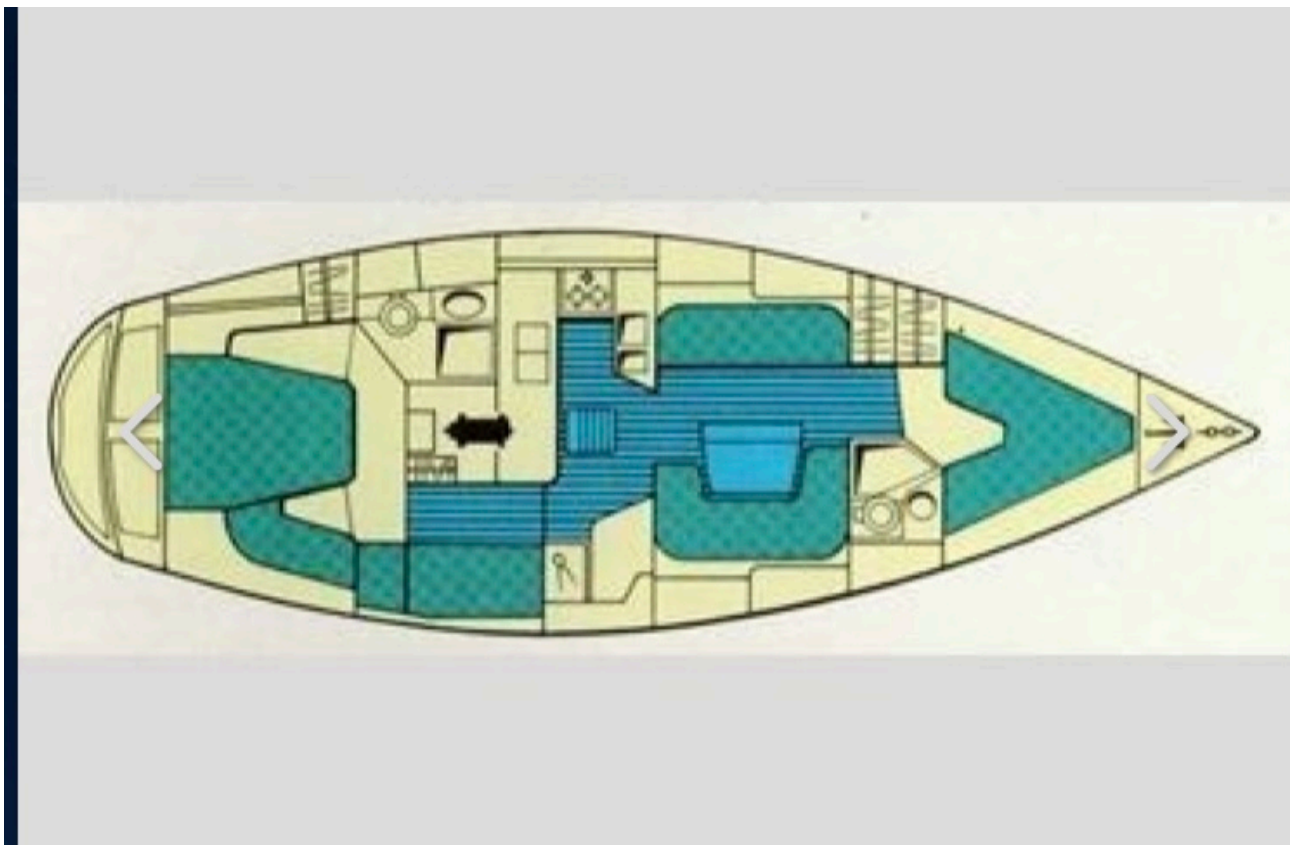
Cabins 3

### Tankage

Water 400 litres

Fuel 270 litres

Holding tank 56 litres



## Cockpit & Stern

- Folding teak cockpit table
- Drinks holder
- Seating cushions
- Sprayhood with roll up centre and hand rail.
- Bimini with sunshades
- Plastimo Compass
- Anchor switch
- Engine panel and gauges
- Manual bilge pump access
- 2 x 12v charger sockets
- Waterproof speaker for vhf radio
- Storage box
- Stainless steel surround on stern
- Transom mounted swim ladder
- Tilting solar panels support
- Wind generator mount
- Danbuoy and lifesling
- Seago Cruiser Plus 4 person canister liferaft (new 2025)
- Shorepower socket
- Pasarelle





### **On Deck**

All sail control lines are led to the cockpit except spinnaker  
Lofran tigris windlass (new 2023)  
20kg vulcan anchor with 60m chain plus rode ( new 2023)  
Fortress anchor with 100m anchor rode.  
Radar reflector  
2 Jackstays  
LED masthead tricolor and anchor light  
Bow and stern mounted running lights  
Steaming light  
Deck light ( new 2025)  
Sunbrella covers for all hatches

### **Saloon**

Spacious seating area either side of folding centre table, U shaped to starboard and a bench seat on port. These also double as 2 single berths with Lee cloths.  
Curtaining throughout  
Ample storage cupboards plus storage behind seat backs  
Fold down table  
Water tanks under port and starboard seating  
Blue tooth stereo speakers  
Heating outlet  
Fire alarm  
12v and 240v sockets  
Engine room access under companion way ladder





## Galley

The galley is to the port side of the companionway. It has ample storage with cupboards under the companionway, below and beside sinks, by the fridge plus additional shelving above the fridge.

There is also shelving with sliding doors on the port side above the cooker.

2 burner Tecma Nelson Stove with grill and oven

Induction Hob

Dual stainless steel sinks supplied with pressurised hot and cold taps

Whale foot pump and tap.

Seagull water filter which provides pure drinking water through a separate faucet.

Well insulated Frigoboat keel cooled fridge

Engel freezer

Watermaker controls

12v hella fan

Galley strap

2x 240v sockets

Fully equipped with all crockery, saucepans, glasses, cutlery, cooking equipment etc





## Owners Cabin and Heads

Spacious owners cabin situated aft and includes private heads compartment. A large walk around bed and plenty of storage.

Seating area to port with storage below

12v Hella fan, ceiling mounted

12v socket and 2x240v sockets

Curtaining throughout

Heater controls and heating outlet.

Jabsco manual toilet (new 2022)

Hot and cold pressurised water supplied on extending faucet.

56 litre black water tank with deck pump out and gravity drain.

Electric shower pump sump.

The fuel tank and battery compartment are located under the bed.

Engine room access





## Forepeak guest berth and heads

Large double V berth with lots of storage underneath and around the sides.  
Storage locker to left of the door.  
Hanging locker in area between cabin and saloon  
Heater outlet.  
Pasarelle stowage  
En-suite heads which can also be accessed through the salon or from the berth  
240v socket  
Jabsco manual toilet (new 2022)  
Pressurised hot and cold extending tap  
Electric shower pump sump  
Access to transducer.  
Access to anchor locker and control switching



## Starboard aft passage/ guest berth

Fold down bunk berths with wooden lee board  
Wet locker used for lifejacket storage  
First aid cupboard  
Engine room access  
Under lower bunk storage used to store tools and spares  
240v socket



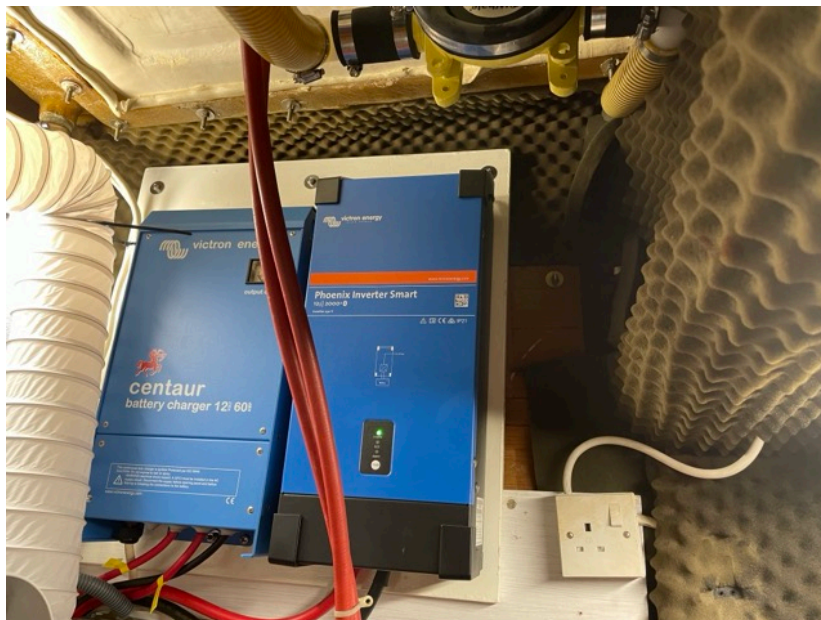
## Navigation and Electronics

VHF ICOM M323g with GPS. Repeater speaker in cockpit  
Raymarine Mn100-2 TackTick wireless wind, depth and speed instruments (new 2023), pod mounted  
Raymarine smartpilot S2 course computer  
Raymarine linear drive autohelm  
Raymarine Control head ST6002, pod mounted, and T100 remote control  
GPS raymarine aerial  
Digital yacht AIT 1500 class B AIS transponder and wireless broadcast unit  
Victron Battery monitor (New 2023)  
Water tank and fuel gauge (senders and gauges new 2023)  
2 x 12v sockets, one as twin USB



## Electrical

Ecotech splash 25 water maker (new 2022)  
Mikuni hot water and cabin heating system  
Immersion heater  
2kw Victron Phoenix inverter (new 2023)  
Victron Centaur dual charging 60amp battery charger (new 2023)  
Sterling 70amp DC-DC charger (new 2023)  
2x150w (8.5amps) solar panels  
Victron 30 amp NPPT controller (new 2023)  
Airbreeze wind generator  
3 x 200ah lifepo4 lithium batteries (new 2023)  
1 x 105ah engine starting battery (new 2023)  
90amp alternator (new 2022) new spare also on board  
Automatic fire extinguisher in engine compartment (new 2022)  
3 portable fire extinguishers (new 2022)  
2 automatic Rule electric bilge pumps (1 new 2023)  
1 manual bilge pump (new 2023)  
1 30amp shorepower connection



## Sails and rigging

Standing rigging replaced 2018

Selden In mast furling

Harken roller furling genoa

Main and genoa made by Crusader sails

General purpose spinnaker made by Hood flown from a stainless steel bowsprit

Spinnaker pole operated from the mast

Lewmar winches. -30 Main winch in cockpit (replaced 2023).

-2x50 sheet winches

-16 genoa furling line

-30 spinnaker halyard winch at the mast

-40 halyard winch at mast



Downwind to Leros!

## Engine and Drive

Thornycroft T110 type, 300 engine hours.

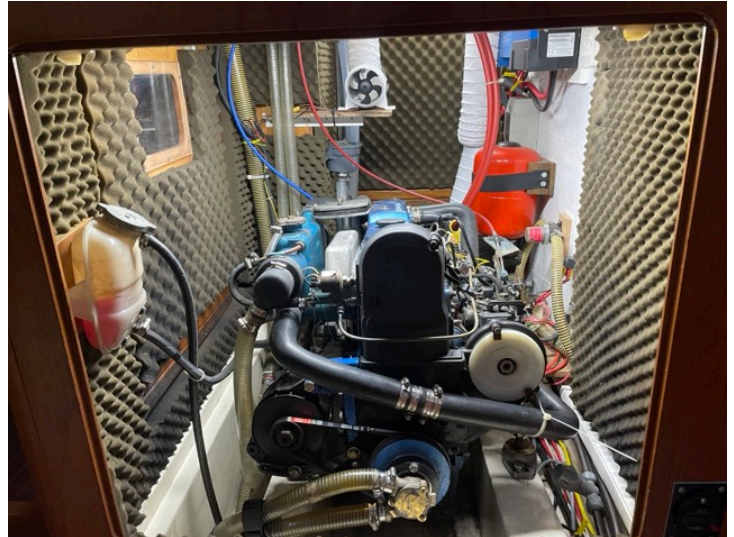
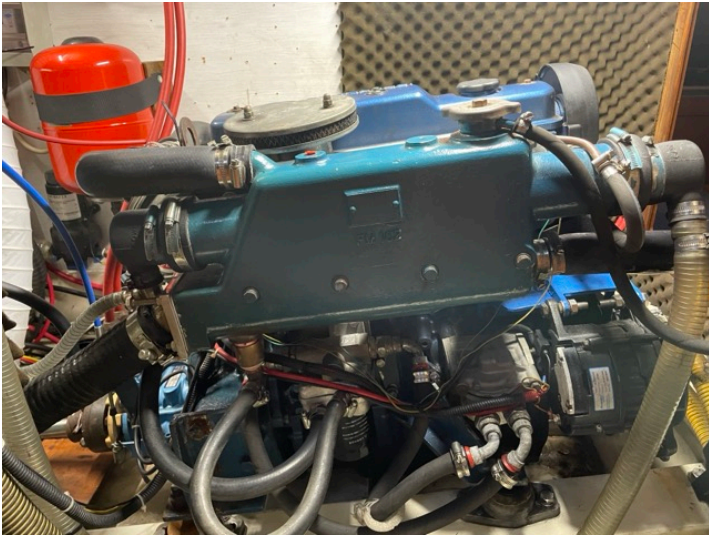
Maxprop feathering propeller

Spurs rope cutter

Seafo inline blower

PSS Dripless seal (new 2023, cutless bearings replaced at same time )

Fuel hoses, engine through hull and water strainer are all recent additions.



## Extras

Aquarib sport 230 dinghy with inflatable floor and keel (new late 2024)  
Suzuki 2.5hp  
GME EPIRB (new 2022)  
Flares  
2xICOM vhf hand held radios  
McMurdo grab bag  
Omegon Binoculars with built in compass (new 2022)  
Docklines and 12+ fenders  
Assorted shorepower cables and connectors  
Spare engine parts including a new alternator and starter motor  
A very large assortment of tools, Imperial and metric  
Spare hoses, plumbing parts and toilet parts  
Electrical tools, connectors, fuses, bulbs and wire  
Dremel plus attachments  
Bosuns chair and Spinlock climbing harness  
Mast climber  
Manual hookah  
Loos gauge  
Emergency VHF aerial  
6 x lifejackets (2xSpinlock)  
Pickup rescue sail  
Spare halyards, lines and warps  
2 x comfort seats  
Fishing rod, reel and lures  
Pilot books and charts



